

Nick Agar Workshop Stepwise

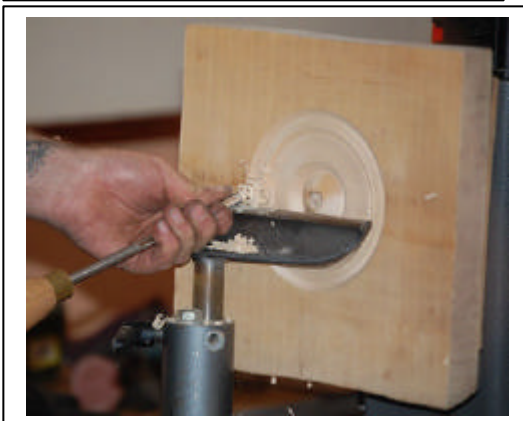
1 Left
Adding screws for
extra security
attaching backing mdf
to workpiece (Already
hot-glued)

2 Right
Mounting on lathe



3 Left
Gouges used to cut
grooves. Surface is
irregular so don't allow
tool to follow surface
until the full cut is
established.

4 Right
Skew chisel to clean
up edges of cuts.

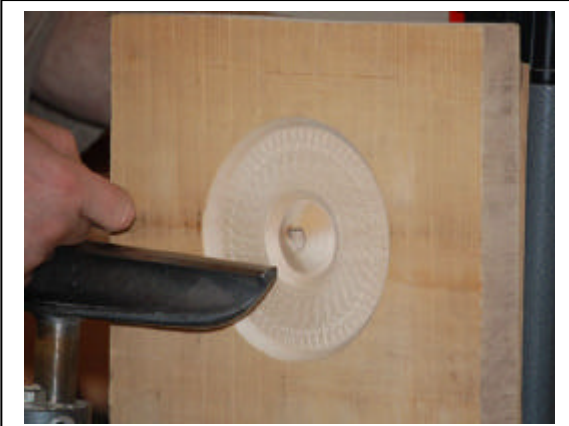


5 Left and 6 right
Cutting grooves from
each side.



7 Left and 8 right
Using large Sorby
texturing tool.

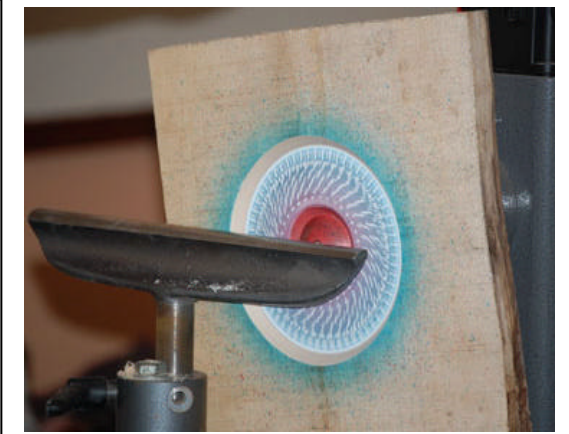




9 Left
Textured pattern



10 Right
Adding colour with
mouth spray.



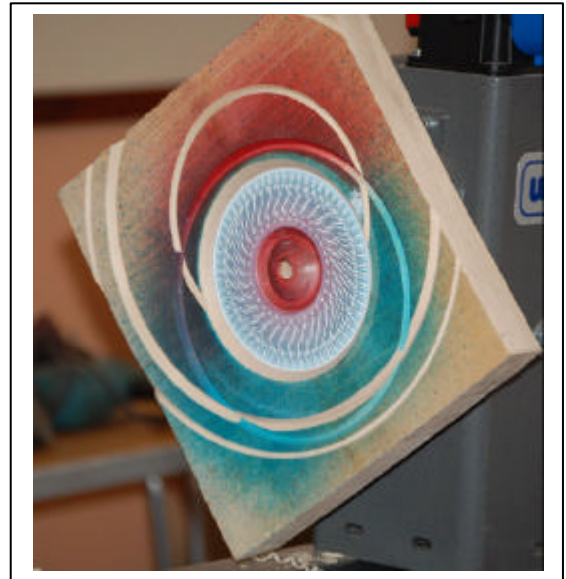
11 Left
Recut groove and
limed texture



12 Right
Re-mounted on
new centres and
cutting more
grooves.



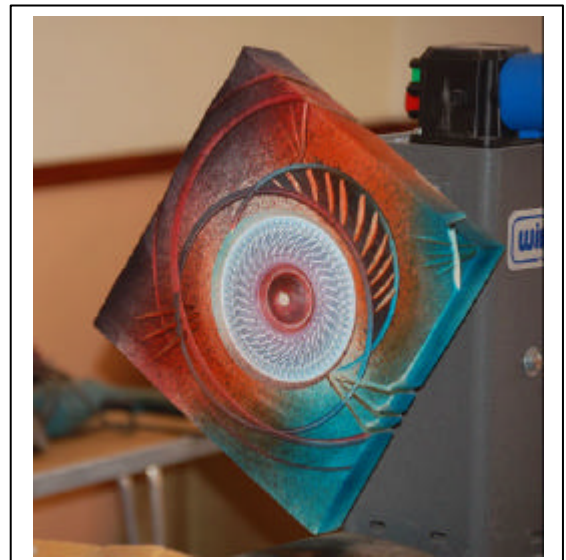
13 Left
Finishing groove
edges with skew.



14 Right
Result



15 Left
Sanding surface
and adding cuts
with angle grinder



14 Right
Final result after
adding more
colour.



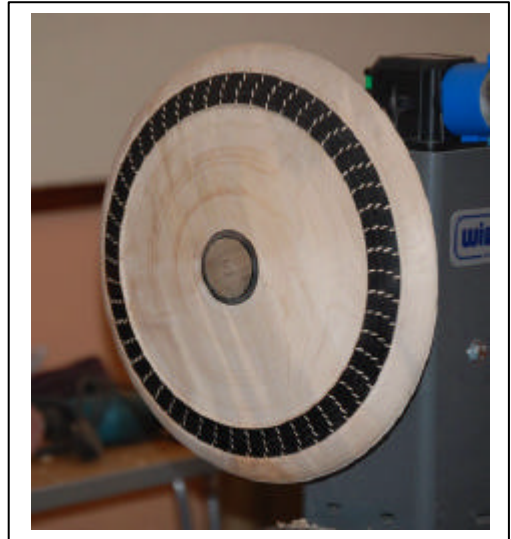
15 Left
Textures on end grain discs from small Sorby & 2 Wagner tools.



16 Right
Quick addition of flecks on ebonised surface using mini Arbortec.



17 Left
Voila



18 Right
Cut back surface to leave partial decoration



19 Left
Power carving

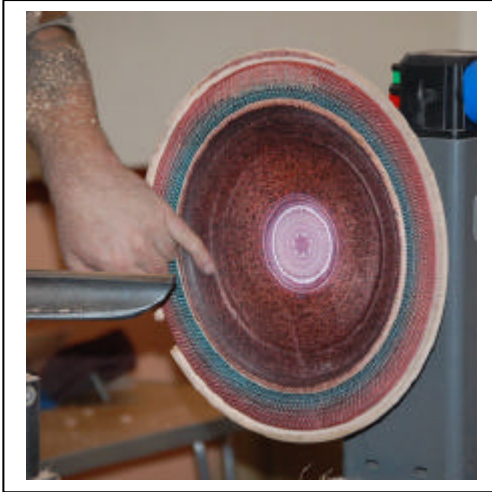


20 Right
Different carved patterns. Note waste fibres from carving not yet cut off. This is done afterwards to achieve better finish to the ends of carved grooves.



21 Left & 22 Right
Cutting ring to terminate carved grooves cleanly.





Final platter from top side after reversing and more decoration.

Note: a lot of the work on the platter was to demonstrate different techniques, some of which were turned away. This was not intended to be a straight start to finish demonstration.

