

Your Turn

The Newsletter of Hampshire Woodturners Association

Volume 15 Issue 4

July/August 2004



Spot the Woodturner

Cover Story

They're definitely Greek and clearly indulging in philosophy, but is there a woodturner in the house?
Read all about it in the Editorial.

Hampshire Woodturners Association

The Association meets at the Railway Institute, 2 Romsey Road Eastleigh (02380 612270) on the first Monday of each month (the second if the first is a bank holiday).

Meetings start at 7.30 and finish around 10.00. Most meetings feature a talk or demonstration about a turning or related subject by a club member or an invited guest. Several times a year we have "turn-ins" with a number of lathes being operated by members demonstrating various techniques. There is a club shop selling various turning sundries, and a library. The "trading post" enables members to advertise things for sale or wanted.

Every month members are invited to bring work for the gallery and there is usually a critique of selected items. There is also a monthly project for novices with the opportunity to discuss the problems encountered and overcome. Refreshments are served at a mid evening break when members can catch up with the latest gossip. A raffle rounds off the evening.

Membership is £17 per year with a joining fee of £5 for new members. Potential new members are welcome to come along and visit us without obligation or charge.

There's a Web Site too. Check it out at www.hants-woodturners-hwa.co.uk

The Committee

Chairman.....Roy Nailor 023 80861893
Secretary.....Bob Hope 0118 9813552
Treasurer.....Alan Sturgess 023 80892622
Novice Projects..... Ian Woodford 01962 854528
Membership Secretary..... David Ackroyd 01489 784985
Turn-ins Organiser/Newsletter Distribution
George Gale 02380 265195
Newsletter Editor..... Dave Gibbard 02380 262660
Webmaster..... Chris West 01794512718

And the address for your Newsletter contributions:
d-m.gibbard@virgin.net

Your Turn

HAMPSHIRE WOODTURNERS ASSOCIATION NEWSLETTER

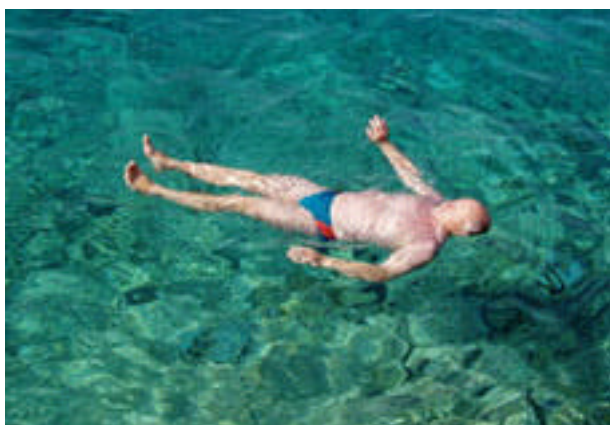
Volume 15, Issue 4

July/August 2004



EDITORIAL – A perfect state of chaos

I really meant to warn you that I was going to be on holiday in Greece again.



In this land of sunshine, warmth and colour, the women do all the menial work leaving the men to philosophise in the kaphenion and live to a ripe old age. Like those on the cover picture.

After a while in this climate, a chap's mind starts to wander, which is fine for a philosopher but can be disastrous for a woodturner. This is why Greek philosophers make lousy woodturners. Really, it's a fact. Try naming one.

So I'm still in the mood on getting home and watch the shavings arc gracefully from the tool and fall in that chaotic way that they do. Then it comes to me in a flash from my dim and distant past – **entropy!** And in that moment of excitement the bark departs from my natural edged bowl and distributes itself chaotically around the workshop.

Now Sophocles would have probably gone to the kaphenion to think deeply about the problem but not me. I get on my hands and knees to find the pieces, vowing to keep my mind on the job in future. What was I saying?

Entropy, oh yes.

It's a measure of the state of disorder, or chaos if you'd like to think of it that way. It's a proven scientific fact that everything tends towards a state of maximum disorder.

Next time you're under pressure to have a clear up you have the perfect answer. Just say "entropy". Clearing up is a complete waste of time. In the end it will be just the same again. It's quite all right to be in a mess.

That's the way it's supposed to be.

In fact, scientifically speaking, a state of chaos is nigh on perfect.

Dave Gibbard – Editor

In this issue:-

REVIEW OF EVENTS

- 17 May – Turn-in.
- 2 June – Visit to Dorset Woodturners.
- 7 June – Sorby Tools
- 5 July – Summer Social

COMING EVENTS

- 2 August – Turn-in
- 6 September – Dave Reeks, hollow forms.
- 21/22 August – The Hillier Show

ME AND MY BIG MOUTH – Ian Woodford

HOW LONG DOES IT TAKE

(to make one of those?)

TURNING AN ACRYLIC BOWL by George Gale.

NOVICE PROJECTS by Ian Woodford

- August – Pedestal fruit bowl
- September – Candle snuffer

BEHIND THE SCENES

NEW MEMBERS

SIGNING OFF

REVIEW OF EVENTS

17 May – Turn-in.

There was much relief when over 70 members made it to the new venue (pictured below) for a turn-in. Not bad considering the later date clashed with the Andover club night. There were as many people saying it was easier for them to get to as those grumbling about having further to come. An unexpected bonus is that we are members of the Railway Institute for the night and can use the bar. Have you seen those bar prices?!



Roy Nailor opened the proceedings by inviting the outgoing chairman, Dave Foote to award the trophy to the "member of the year". Dave chose Chris West for his work in creating and maintaining the website. Well done Chris, most deserved if I may say so.



Dave awarding the trophy to Chris West.



Roy then awarded bottles of wine to all the helpers outside the main committee. They were: John R. Davis & Brian Hannam (competition), Harry Butler (gallery), Ron Broadway (on holiday) (Hilliers), Les Thorne (use of lathe and mouth – *don't blame me, I'm just the reporter*), Chris Davey, Phil Hill and Roy Nailor (Tea), Colin Cordery & Jack Wilson (library), Derek Holdaway & Brian Mitchell (novices), Brian Barker & Jon Harmer (raffle), Steve Page (sound & vision), Chris West (website), Len Osborne & Roy Holder (shop). It was very nice to see so many helpers, but we still need volunteers for the raffle since Brian and John have stood down. Also, we need someone else to help with the tea following Roy's "promotion". Come on, please, the Committee members can't carry on covering these jobs as well as their main duties.

So finally the turn-in got under way. Les Thorne was making boxes in the dark (*a dig at the poor lighting by the lathes. We'll sort it out for next time*). Roy Holder a pot pourri pomander and Harry Butler fruit.



Harry was sporting a natty line in kaftans. Brian looks on disapprovingly.

After tea, Chris West gave a short critique on the gallery – pictures on the website. The novice project had 3 entries this time. That's 50% better than last month but still something needs to be done. See "Behind the Scenes". The raffle rounded off the evening. Clearing up was such dusty work we adjourned to the bar.

Editor

2 June – Visit to Dorset Woodturners

Following an invitation from Derrick Hilton, secretary of the Dorset Woodturner's Association, six HWA committee members were guests at their 2nd June meeting. About 30 DWA members attended, however this was said to be lower than usual and meetings normally attract around 40. An enjoyable evening was spent discussing how the two clubs operate with a view to benefiting from cross fertilisation of ideas. A joint gallery of work was exhibited to illustrate our skills and encourage group discussion of the pieces.

HWA members will remember that we've previously had the pleasure of welcoming some Dorset Woodturners, and at that time their membership numbers were limited due to the size of Derrick's workshop. However they've now moved to the Braeside Hall, St Leonards (near Ringwood) and space is no longer quite such a problem. They're therefore starting to spread their wings and were interested to hear how we do things in HWA.

Of particular interest to them was the way we run our turn-ins and workshops. They were also keen to hear about our arrangements for guest speakers, video facilities, shop, library and tea club. However the relative size of the HWA is such that we can afford these benefits on a lower annual subscription.

Continued.....

REVIEW OF EVENTS, CONTINUED.....

Visit to Dorset Woodturners, continued....

One other item of financial interest was the club insurance premium and it seems that they could benefit from contacting our broker.

We too learned quite a lot from them and were impressed by the fact that most Dorset members brought gallery items, though the standards varied. That took a lot of courage, given that they'd no idea of our abilities and what we would be bringing. Another impressive fact was that their members are very keen to help out with the running of their club and join in with the meeting. Compared with our difficulty in recruiting helpers, lack of support for competitions and novice tasks etc, we in the HWA seem quite apathetic and could take several leaves out of their book.

A bit of light relief occurred at break time, whereupon Ann served cups of tea/coffee, biscuits and CAKES. We commented that perhaps we should send Ern (our tea boy) on a home economics course, but unfortunately we couldn't make him so attractive without major surgery.

All in all a very interesting evening and we left feeling that there is a genuine and growing bond between the two societies. No doubt we will be inviting them to attend one of our future meetings so that we can return their hospitality.

Roy Nailor

7 June – Sorby Tools

Fewer than usual members turned out on a very hot evening to watch Chris Pouncey of Sorby Tools give an informative and entertaining demonstration of his company's turning tools and accessories. Throughout Chris demonstrated on a DVR lathe, which is claimed by Sorby to be the most technologically advanced machine on the market. It looked to be very rigid and business-like and, coupled with electronic variable speed, it accomplished all that Chris asked of it albeit that the items were relatively small. Anyone looking for a lathe of that size and has a budget to match should give it consideration.

A wide range of tools and techniques were demonstrated, including the Supa Nova chuck, Steb centre, Adaptable rest, Spindle master all purpose tool, RS200 hollowing tool in straight and cranked versions, Sand master and the Texturing and Spiralling tools. In each case Chris demonstrated their use and gave useful tips regarding such things as sharpening, lathe speed, rest position and presentation of the tool to the work. He also answered questions in a knowledgeable yet friendly manner, even those aimed at determining why the bits and pieces are so expensive.

In my opinion some of the gadgets were too gimmicky and seemed to be designed with the sole purpose of taking some of the skill out of turning whilst extracting hard-earned cash from my wallet.

However, for those that like such nick-nacks, Chris was offering a discount on the night and quite a few members took the opportunity to swell their tool bags.

All in all an informative evening which served the purpose of keeping us abreast with the developments in the Sorby range of tools and accessories.

Roy Nailor

There were a few technical snags. Due to a last minute back problem Steve Page couldn't attend so we had no sound system. And we have to do something about the lighting.

The first round of the competition saw a disappointing entry of 4 in the open and only 1 novice. Open winner was Stuart Matthews with a gavel, second was Dave Foote with a box of spillikins and third Dave Gibbard with a vase. The novice winner was Bill Willetts with a vase. Pictures on the website.

The novice project, in contrast, had a reasonable entry of 9 goblets. Why didn't you put them on the competition table?

Sorry to bang on about it, but we still need volunteers for the raffle and tea.

Editor

5 July – Summer Social

A modest turn out as usual for the summer meeting enjoyed an evening of intellectual stimulation.

The opening announcements consisted of

- yet another plea for volunteers for the raffle and tea,
- an acknowledgement of an increase in the number of novices entering work for the project
- disappointment at last month's competition entry
- and changes to the raffle to encourage name badge wearing (see "behind the scenes")

Roy Nailor then opened his Pandora's box of gadgets and nick-nacks. There were home made drives and chucks, chisels made from nails and gouges from roll pins and the piece de resistance, a turntable made from old washing machine parts with jigs for sharpening tools.



Volunteers for the HWA team for Scrap Heap Challenge should apply to the chairman.

Summer Social – continued

It was all too much for some members who were slow to come forward with questions for the brains trust. However, the panel consisting of distinguished visitor Gary Rance, Les Thorne, Brian Hannam and Chris Davey soon warmed up the audience and the banter began to flow.



We had advice and discussion on

- Finishing, (acrylic spray seems to have become the finish of choice for its shine and handling characteristics)
- Use of paper towels not rag for polishing safely
- Drying wood – no substitute for nature
- Risks of spreading disease from wood
- Dust extraction - with a tip that a domestic air purifier from Argos is effective, cheap and quiet.

Anyone feel like arguing with any of that? I might start the ball rolling for stating a preference for a more natural looking appearance than usually obtained from a spray can.

Once again George Gale had put on a magnificent spread of “nibbles”. This time members who had the inclination could take advantage of the bar at very good prices. The money saved by not providing our own alcohol was added to the raffle prizes. It was good to see last month’s modest improvement in numbers of novices entering the project being maintained with a selection of platters this time.

Dave Foote was prevailed upon to talk about the gallery. He demonstrated his delegating skills by asking the turners to talk about their own pieces! More on the website.



There was far too much crammed in to the evening to do it justice in the space available. So I thought we could have a series of hints and tips and gadgets based on some of the items and comments, spread over several issues. This will allow more details of each idea to be included.

Editor

COMING EVENTS

2 August – Turn- in

The turn-in this time will feature Alan Sturgess, Dave Gibbard and Ian Woodford.

The novice project is a pedestal fruit bowl.

And, of course the regular features – gallery, raffle, shop, library, and the chance to chat in the tea break.

6 September – Dave Reeks, Hollow Forms

Another class act by a visitor I don’t think we have had at the club before.

The novice project is a candle snuffer.

21/22 August – The Hillier Show

The exhibition and sale at the Hillier Gardens and Arboretum, Romsey, has become a regular and successful event for the club. Doing the honours this time are John R Davis, Jon Harmer, Roy Holder and Ron Broadway.

Once again thanks to Ron for organising the event.

Editor

ME AND MY BIG MOUTH – Ian Woodford



Occasionally I am asked to make a trophy for competitions at the Royal Winchester Golf Club and last year one such request occurred. An annual match occurs between the Ladies and Seniors (men) and when asked to make a trophy I agreed. In the next breath the Seniors Captain asked if 6 silver spoons could be incorporated and I knew immediately that I would have problems.

The spoons were given to me for reference and they are truly delightful. Made of solid silver, the handles are crossed golf clubs with a ball on top (see photo). They were won by his auntie in the 1940s when she played in India. However, the trophy was not required for many months so I placed it low on my priority list.

You know how it is; time goes by and these things start to play on one's mind and believe you me, this project certainly did. I drew several designs but the real problem was attaching the spoons in such a way that they could be removed for cleaning. Eventually it dawned on me that small silver pins could be the answer by fixing them between the crossed golf clubs. With one week to go before the match the trophy was finished. Two top finials were made, one of maple and the other in pink ivory. They are a push fit and depending on the outcome of the match, the appropriate one is inserted.

The match was played in the usual friendly way (some hopes) but for the first time ever the Ladies won and the pink finial was duly inserted.

HOW LONG DOES IT TAKE TO MAKE ONE OF THOSE?

Do you mean..... Not plant the tree but find the wood,
just see the piece, (as I could)?
To find a highly figured burl,
a crotch, an eye, or pearly curl?
And once I spy it, perhaps buy it,
inventory, store, and dry it?
Then saw or cut it, possibly kiln it
glue, imbue with fill, or drill it?
You mean that once I'm satisfied
its stopped the warps, checks,
cracks, once dried?
And mounted on the lathe, to turn it,
(which takes much practice, just to learn it)

and then employ a gouge, or two,
or use a skew, which I don't eschew,
to mould it, shape it (what's your pleasure?)
by all means, I'm sure to measure,
then sand it smooth, please wear your mitts,
from course to fine, 10,000 grits,
then braze, or burnish, paint, or polish,
(the goal: enhance, but not demolish)
Is that your question, start to end,
how long's that path, its way to wend?
Or do you merely want to know
how long it turned?
Ten minutes or so.

*Attributed to John A Styler,
discovered by Ian Woodford*

TURNING AN ACRYLIC RESIN BOWL

Anyone visiting the Gale household can hardly fail to notice the lovely colourful bowls and side tables. If the visitor is a woodturner, the first question is usually "how did you do that, George?" Well, I've attempted to write it all down, but if you fancy having a go and want more details, I am sure George will be only too happy to tell you more.



I am going to describe the making of the bowl shown in the picture. Apart from the foot, the bowl is almost entirely made from coloured acrylic casting resin*.

The first thing to do is to make a sacrificial bowl into which the resin is to be cast. George used sheets of chipboard cut into discs and glued together. He mounted these on the lathe and turned the inside to a bowl shape. This was parted off parallel to the axis so that he ended up with a chipboard bowl with a 4" hole in the bottom.

He then turned a 4" diameter cylinder of wood to fit the sacrificial bowl, about 4" long. This would eventually become the foot and centre of the finished bowl. The foot was inserted into the bowl protruding about 1/2" and glued in place. When secure, the bowl was remounted by the foot and the inside trued up leaving the centre protruding about 1/2".

Meanwhile some sheets of various wood about 1/4" thick were fixed into a small box with gaps between them. Now comes the messy bit. The acrylic comes in 2 parts, the resin and hardener. George mixed some artists oil paint (red) with the resin and then added the hardener. He poured this mixture into the casing box to fill the gaps between the sheets of wood. When cured he broke away the box and cut the cast laminates into strips on a bandsaw. The strips were about 1" long with alternating bands of wood and red resin. These strips were glued to the inside of the sacrificial bowl. You can see from the picture the pattern that George used, but you can use any pattern you like.

Back to the resin mixing. This time he made up a mixture using black paint and poured it into the bowl all over the glued-on strips, swirling it round to work it into the gaps. It goes off quite quickly, so he just kept swirling it around until it flowed no more.

The whole thing was re-mounted on the lathe by the foot and carefully re-turned inside and out. On the outside, the sacrificial bowl was completely turned away exposing the acrylic/wood laminated strips. A wooden ring, previously turned, was glued to the top edge and turned to form a neat rim.

The bowl was sanded and polished just as if it were wood. George used finishing oil on his and very nice it looks too.

**You can buy the acrylic from
Wessex Resins and Adhesives,
Cupernham Lane,
Romsey SO51 7LF.
Telephone 01794 521111,
e-mail information@wessex.resins.com*



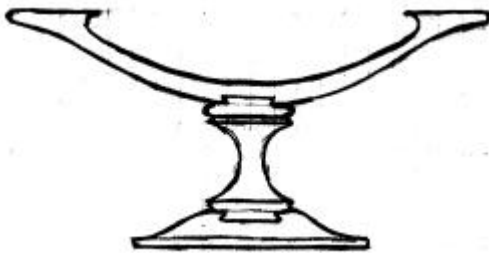
George Gale admiring his bowl

Dave Gibbard

NOVICE PROJECTS by Ian Woodford

August - Pedestal fruit bowl.

For those of you that take 'Woodturning' there is a good article on this very topic in April 2003 page 29. Have a good read and use any information you wish. This is a project the end result of which will look good in any home. In simplistic terms it is a bowl that is elevated by way of a pedestal base. The pedestal can be made from either one or two pieces of timber. The main difference is that a pedestal made from one piece could be a little wasteful of wood but it has the advantage that the grain will match throughout. However I feel that making the pedestal in two pieces will, on this occasion, be easier as a novice task. The bowl does not need to be any larger than 8 to 10 inches in diameter by about 3 inches deep. The pedestal will be fine at about 4 inches high. Remember that the main 'stem' of the pedestal will need to have a spigot at both ends to fit the recess in the bottom of the bowl and then the other end into the base. Accurate turning is necessary for the spigots and the corresponding recesses. It could be attractive to make the stem out of contrasting wood. However if you do this it invariably looks more pleasing if the 'stem' is a darker wood. For aesthetic reasons keep the grain in all three pieces aligned in the same direction. The following diagram may give some ideas for design and proportion.



Pedestal bowl showing 3 separate sections, bowl, stem and base

September - Candle snuffer.

Quite by coincidence, this month's project is the topic of an article in 'Woodturning' May 2003 on page 15. If you have it, digest the information and use it. This project is all spindle work but also involves some end grain hollowing. The handle will entail turning timber the length of which is longer than any of our previous projects this year. You will need a steady hand for this!! The snuffer is like turning the end of a candlestick or a small goblet. Keep the design fairly simple, as this will look more elegant.

The hole in the snuffer, that accepts the handle, can either be drilled on the lathe or in the blank before turning starts. If you choose to initially drill the blank then accurate marking out is required otherwise an off centre hole will result. If you drill after turning then a steady hand as well as accuracy is necessary. For aesthetic reasons the hole is drilled at an angle as this gives the finished piece, a pleasing effect.

Turn the handle totally between centres but because of its length and narrow diameter vibrations may occur resulting in a rippling effect. To overcome this, keep your tools sharp and use a steady if you have one (not many of us do), or use your left hand as a steady on the revolving wood. This can result in warm fingers but will prevent vibration.

Initially the snuffer is mounted between centres and a spigot turned to suit your chuck. Mount in the chuck and open out the hole first. Don't forget to use end grain hollowing techniques as it's easier and gives a cleaner finish. Then turn the rest of the external profile.

Reverse onto a waste block (jamb chuck) and clean the other end up. Finally use pva to glue the two pieces together. Have fun.



Candle Snuffer

BEHIND THE SCENES

Mentor Scheme

An initiative which the new committee is proposing is a mentoring scheme. This is in response to comments by some new members about finding it difficult to get to know the ways of the club. We have also had falling numbers going in for the novice task and thought that might also be connected. The idea is that existing members will be encouraged to help a new member who lives nearby to find his (or her) feet. To explain the benefits of participating, to point them in the direction of someone who could give advice about a turning problem or buying equipment or just sharing transport to meetings. In short, making them feel welcome. Once membership renewals are in, the intention is to circulate a list of members as we used to. New members will be invited to contact someone on the list who lives close by, but you don't have to wait to be approached. The name and phone number of each new member is published in Your Turn together with the area in which they live. So why don't you do the neighbourly thing and give them a call if you are close by, before you have your arm twisted?

Volunteers needed

Talking of volunteering, we are disappointed that we still need helpers for the tea and raffle. The Chairman has contrasted this lack of response with the spirit found in the Dorset Club where they seem to have no trouble running such activities with only one third of our membership to draw on. Activities such as these are to be found in most healthy clubs and it would be a sad reflection on the state of mind of our club to drop them for lack of volunteers.

Name Badges

In a club of well over 100 members, The wearing of name badges at meetings is a great help to other members and in particular newcomers. For this reason the monthly draw was introduced with qualification that if your name came up you only got the prize if you were displaying your name. Since the draw was stopped to fund the competition, many members have not bothered to wear a name badge. So there will be a new initiative. Each month, one of the raffle prizes will be £20 cash, and guess what? You need to be wearing your name to qualify. Also you need to have paid your subs!

NEW MEMBERS

We welcome 6 new members:

John Gibbs from Shirley, 023 8078 9707

Andrew Gleadon from Chawton, 01420 542251

David Hacker from Bishopstoke, 023 8061 3043

Stuart MacDonald from Marchwood, 023 8086 5395

Martin McLuckie from Blackfield, Southampton, 023 8089 8146

Roger Sign from Kings Worthy, 01962 881015.

Come on you mentors, give them a call if they live near you.

SIGNING OFF

It's been a bit of a struggle this time to meet the deadline. What with holidays and other distractions I have had less time than usual.

This is just such an occasion that I could do with some help. My plea for an assistant in the previous issue was actually serious but I haven't exactly been overwhelmed by offers. The position is still open. Anyway, thanks to those who have contributed material but there were no letters or emails this time.

.....

Have you recovered from the football yet?

I don't normally watch. It's such agony.

I am convinced that watching England play football actually shortens your life.

The tournament started when I was in Greece and 2 things happened. The Greeks, newcomers to this sport, were doing rather well and England had found a "phenomenon" called Rooney who was perhaps prematurely being compared with Pele.

So I watched the last England match, didn't I?

The "phenomenon" lasted half an hour and after that came the familiar agonising, dour struggle with the inevitable result. The captain seemed to spend most of the time horizontal. According to the tabloids this is a position he has been practising lately.

I have a word of caution for my Greek friends. If you want to retain your famous longevity, you'd better not start taking football too seriously.

Now I wonder how our other phenomenon is doing at Wimbledon?

Oh dear.

Dave Gibbard, Editor