

# Your Turn

The Newsletter of Hampshire Woodturners Association

Volume 15 Issue 5

September/October 2004



**Wood-Working in the Wood**

## Cover Story

Is this a new style demo by Hampshire Woodturners? I'm sure I recognise those two members but I don't think they've got their name badges on. No, it's actually an exhibit by David MacDairmid in cardboard and resin at the Hillier's "Art in the Garden" exhibition. See the article in this issue of "Your Turn"

## Hampshire Woodturners Association

The Association meets at the Railway Institute, 2 Romsey Road Eastleigh (02380 612270) on the first Monday of each month (the second if the first is a bank holiday).

Meetings start at 7.30 and finish around 10.00. Most meetings feature a talk or demonstration about a turning or related subject by a club member or an invited guest. Several times a year we have "turn-ins" with a number of lathes being operated by members demonstrating various techniques. There is a club shop selling various turning sundries, and a library. The "trading post" enables members to advertise things for sale or wanted.

Every month members are invited to bring work for the gallery and there is usually a critique of selected items. There is also a monthly project for novices with the opportunity to discuss the problems encountered and overcome. Refreshments are served at a mid evening break when members can catch up with the latest gossip. A raffle rounds off the evening.

Membership is £17 per year with a joining fee of £5 for new members. Potential new members are welcome to come along and visit us without obligation or charge.

There's a Web Site too. Check it out at [www.hants-woodturners-hwa.co.uk](http://www.hants-woodturners-hwa.co.uk)

## The Committee

Chairman.....Roy Nailor 023 80861893  
Secretary.....Bob Hope. 0118 9813552  
Treasurer.....Alan Sturgess 023 80892622  
Novice Projects..... Ian Woodford 01962 854528  
Membership Secretary..... David Ackroyd 01489 784985  
Turn-ins Organiser/Newsletter Distribution  
George Gale 02380 265195  
Newsletter Editor..... Dave Gibbard 02380 262660  
Webmaster..... Chris West 01794512718

And the address for your Newsletter contributions:

d-m.gibbard@virgin.net

# Your Turn

## HAMPSHIRE WOODTURNERS ASSOCIATION NEWSLETTER

Volume 15, Issue 5

September/October 2004



### EDITORIAL – The Talking Stick

A friend of mine called Rob has a wife, Iris, with a formidable capacity for talking. She has the ability to talk endlessly and, for the most part, meaninglessly, about almost any subject. Not wishing to be seen talking to herself, she needs somebody else to be present. The other person is not expected to participate in any way other than to grunt or nod in agreement occasionally. Rob is not a naturally quiet type. Indeed when not with his wife he is a man liberated from this verbal yoke and exhibits similar powers himself. But when she is around there is no contest and he becomes a nodding, grunting mute.

I was wondering what to give him as a birthday gift and remembered something I saw on an Indian reservation in North America. To encourage good order and logical argument at pow-wows, only 1 person was allowed to speak at a time. The speaker had to be in the possession of a stick, which he had to give up after a set time had expired. Whilst he was holding the “talking stick” as it was known, he alone was entitled to speak and could not be interrupted.

I thought this was a very good idea and suggested it for meetings at Work. It seemed to me that it is often the quiet guys who have the good ideas but they give up trying to get a word in. However, my suggestion merely confirmed management’s impression that senility was approaching faster than they had thought. I have been largely ignored ever since, in spite of shaking my stick at them. (Hey, maybe that’s the problem!)

Undaunted, I summoned up my meagre spindle turning ability and made my version of a talking stick for Rob. He waves the thing enthusiastically at Iris but she hardly breaks her verbal stride. She is clearly unable or unwilling to grasp the concept. I have decided she would make a poor Indian but an excellent manager at my company. In spite of its ineffectiveness, Rob seems delighted with the stick and all that it stands for and continues to brandish it in silent protest.

*Dave Gibbard – Editor*

### In this issue:-

#### REVIEW OF EVENTS

- 2 August – Turn-in.
- 6 September – Les Thorne on Finishing
- 28/29 August - HWA at Hilliers

#### COMING EVENTS

- 4 October - Dave Reeks, Hollow Forms
- 1 November – Gregory Moreton, Wet turned bowls.
- 13 November – Brookes Centre Exhibition
- 6 December – Stuart Mortimer

#### LETTERS & E-MAILS

#### ART IN THE GARDEN AT HILLIERS

#### JON HARMER’S FRENCH CONNECTION.

#### NOVICE PROJECTS by Ian Woodford

- October – A decorative bowl
- November – A wall clock
- December – A three legged stool

#### ENGINEERS’ TALES – Ron Broadway

#### BEHIND THE SCENES

#### NEW MEMBERS

#### SIGNING OFF

## REVIEW OF EVENTS

### 2 August – Turn-in.

A hot sticky August evening saw many members taking advantage of the bar even before we started. Bob Hope, standing in for the Chairman, gave the preliminary announcements and introductions. Reminders about the continuing need for volunteers for tea and raffle, the badge wearing initiative and the requirement to actually pay subscriptions.

The pleas for volunteers seem to be bearing fruit and up stepped Phil le Bon to help with the tea and Ralph Stone, David Bird and Brian Matcham for the raffle. Thanks to all of you.

Then on with the show. Ken Linham was making dolls house furniture, Alan Sturgess a dressing table tidy and yours truly mushroom and acorn boxes. Sorry about lack of pictures, I was too busy enjoying myself to walk round with the camera. You can find some photographs by Chris West on the website.

The novice project revival continued with a good entry of pedestal dishes.

I really mean that about enjoying doing the turn-in. It has been some time since I did one and I found it challenging to explain exactly why I was doing things the way I was. Sometimes there was no good reason and someone in the audience had a better idea. It's called participation and we all learn more that way, including the demonstrator.

The evening was rounded off by the raffle draw. The cash prize was not paid out because the ticket holder was not wearing his badge. So there's a roll-over and hence twice the reason to wear yours next time.

I'd name the unfortunate non-winner but he didn't have his name badge on.

### 28/29 August - HWA Exhibition at Hilliers

Thanks to Ron Broadway again for organising this regular event. Much interest was shown in the exhibition put on by Ron, John R Davis, Jon Harmer and Roy Holder and it was a profitable experience for some at least. Each exhibitor donated a piece of work to the Arboretum which was much appreciated. I believe they intend to raffle or auction them to raise funds.



*Visitors inspecting John's display at Hilliers*

### 6 September – Les Thorne

Les was going to do the member's demo in October until Dave Reeks broke his arm. Les kindly agreed to switch and stepped in at the last minute on the subject of "finishing".

His message was that sometimes the use dictates the finish. For example utility items for food should be oiled with a food-safe oil otherwise the finish will come off, look unsightly and possibly poison people. Not good for business. Otherwise, it is largely up to you. Perhaps turners are too hung-up on the subject. Les told the story of a lady customer that so liked one of his rough-turned unfinished bowls that she insisted on buying it as it was and refused all offers to finish it. Another message was that the maximum effort should go into the preparation. A well sanded surface without blemishes will look good with almost any finish. To illustrate the point he made 2 similar cherry bowls, sanding from 80 to 400 grit and burnishing with wet and dry paper (used dry). One he finished with Chestnut finishing oil, the other with sanding sealer and wax. The latter was more shiny but would suffer more with handling.

He then made a couple of bottle stoppers. These need a very durable finish. Whilst acknowledging the preference of many for friction polish, Les favours sprayed-on acrylic (off the lathe). This he buffs on an un-stitched wheel using buffing compound.

The meeting was well attended by over 80 members and several new faces. Our technical wizard, Steve Page, had wired Les into the Hall's p.a. system and the sound quality was very good. The video was also put to good use, the screen images nicely supplementing Les's professional presentation.

## COMING EVENTS

### 4 October – Dave Reeks

Assuming his arm is mended we'll be entertained by Dave Reeks demonstrating hollow forms, postponed from September.

Don't forget the second round of the Competition. This time it is faceplate work (which of course includes chucks) and the subject is a bowl or platter. As before, there is an open and a novice category. The novice project will be a pepper mill.

### 1 November – Gregory Moreton, wet turned bowls.

Yet another visiting turner. Greg Moreton will be demonstrating wet turning, I believe with natural edges too. Bring your waterproofs if you plan to sit in the front row.

The novice project is a decorative bowl.

### 13 November – Brookes Centre Exhibition

The exhibition and sale at the Brookes Centre in the centre of Winchester has become an annual event thanks to Ian Woodford's efforts. This year it will be held on Saturday 13 November, hopefully well in time for the Christmas shoppers.

### 6 December meeting

I just thought I'd give plenty of notice of a change to our usual Christmas format. In the past our festive season social meeting has been poorly attended though those who come like the event. So this year whilst still retaining a festive theme, we've invited Stuart Mortimer to do a turn. (On a lathe that is). There will also be a Novice project this December – see Ian's write up in this issue.

## LETTERS AND EMAILS

*Always good to hear from a former editor. This letter comes from Derek Carter.*

Dear Dave

Just received the latest newsletter - good as ever! I am diversifying and doing a fair bit of woodworking as well as turning now. Woodturning seems to be going through the doldrums at the moment -Yandles have closed their gallery to expand the general crafts area. There is now just a small amount of woodturning in the upstairs crafts shop. I popped into Broughton Crafts in Stockbridge a few weeks ago and virtually all of the turned items have gone. I had a commission to make a trophy for a music society and suggested a grand piano made to dolls house scale 1/12. They liked the idea then I had to build it. Much trawling through sites on the web eventually turned up a set of profiles which I was able to scale. Built it all from dark stained Mahogany other than the keys and pedals. The only turned parts were the legs! The keyboard was intricate to say the least -I cut it down to 5 octaves to reduce the complications somewhat but even then the ebony sharps were less than 1.5mm wide! The naturals were cut from holly. I also used holly for the pedals. I worked out a way of hinging the fall and lid using copper tubes in the same way as stained glass boxes are made. The trophy was well received and through work of mouth I've had orders for another 3. Also made one for myself!!

I could let you have pictures and a few more words if you are interested for the mag -although I stress there is not much turning involved!

Best regards - Derek

*In spite of my biting his hand off, Derek managed to write an article which will appear in the November issue. – Editor*

*This Email came from Ian Woodford:-*

Hi Dave

For those members who might venture West, it might be worth pointing out that contrary to what we heard from the Dorset club, John Bradford's at Ottery St Mary are not closing.

Whilst away in Beer for the weekend, I called in at the annual show put on by the Woodbury club. The show was a delight to attend. They are 100 strong and their annual competition attracted 143 pieces!!!

Ian

*Food for thought indeed. Hopefully this will shame some more of our members to enter the next round of the competition in October (faceplate turning)*

*Editor*

## ART IN THE GARDEN

I wonder how many members visited the Art in the Gardens exhibition at the Sir Harold Hillier Gardens? Marion and I took a walk round the gardens on one of the few nice days in July to see the 95 exhibits of huge variety. These were placed in the gardens mainly near the visitor centre and Jermyns House. The artists had used materials ranging from stone through glass and plastics to metals and, of course, wood. There were some turned pieces on a monumental scale by Liam O'Neill on the path approaching the visitor centre to tempt you in to see more.



*Who is that woman peeking through Liam O'Neill's "Headford Burl"?*

Staying with the wooden theme there was furniture (mostly for outdoor use) from the conventional to the most bizarre. We stumbled across some huge wooden balls hanging in the trees made from discs of cherry held together with screws and internal bracing wire. The artist was Joc Hare.

*There she is again, playing with Joc's balls.*



Another thing to take my eye was a huge white cast stone face set amongst the trees. Titled "Ponderer", sculpted by Jilly Sutton:-

*Jilly Sutton's "Ponderer" Probably wondering where Marion has gone.*



My favourites were bronzes, one called "Moon Dog" by Olivia Clifton-Bligh – an impression of a hound baying at the moon, - and the sad "Reflection" (bronze resin) by Sara Myres, pictured left.

If you haven't been to the exhibition and I've whetted your appetite, it is on until 4 October.

*Dave Gibbard*

## JON HARMER'S FRENCH CONNECTION

*When I visited the Sparsholt Show a few months ago, I came across Jon Harmer's stand and noticed this nice banner with the description "artisan du bois". Quick as a flash I worked out that this was French for something like "craftsman in wood" so I naturally asked about the French connection.....*



Jon told me that that it started when he was "spotted" by someone from the Twinning Committee in Alresford whilst demonstrating at Bill Thorne's shop. Alresford is twinned with Briquebec near Cherbourg and Lachendorf(?) in Germany. Jon was invited to become part of the UK delegation to an annual "Foire-Exposition", "Arts et Produits du Terroir" (Exhibition of regional arts and products). That was in 1996 and Jon and his wife Morieach have been taking part in late September ever since.

The fair consists of about 30 stands in the village hall. They are mostly French exhibitors from the region selling mainly food (naturally!). There are a few German stalls with beer, bread and schnapps. The British contingent has dwindled from 6 to just Jon last year as the enthusiasm for the twinning movement has declined.

Jon readily admits that the incentive is social rather than commercial since the sales over the weekend hardly cover the stand fee (£25) and the cost of travelling by road and ferry to get there.

But over the years Jon and Morieach have enjoyed the delights of the French way of life, staying with local families associated with the French end of the Twinning organisation. So if you fancy taking part I am sure the Twinning Committee at Alresford would be interested. (As long as you are not a woodturner says Jon!)

The Harmers have also exhibited at other locations in France, for example at Sauve near Nimes. Jon is currently working on Morieach to persuade her to include a lathe and boxes of wooden produce when packing her new Picasso for their travels in France. Just in case they stumble across more craft fairs or markets crying out for a woodturner.

Now about that banner. It was made for Jon by "Graphics" in Winnall Close, Winchester. It is a substantial plastic material with eyelets for hanging up. Someone from Graphics took the photograph in Jon's workshop and did the artwork before making the banner. It cost about £100 all-in which sounds quite good to me, particularly as Jon ended up with 2 banners because Graphics made a mistake with the Email address on the first.

*Dave Gibbard*



*Jon at work on his stall at the Briquebec show.*

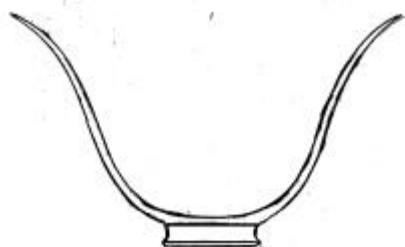
## NOVICE PROJECTS by Ian Woodford

After a little thought the original project for October has been changed mainly because some tools and accessories needed might not be available to all. So the last two projects for the year have been brought forward and Decembers' changed to a three legged stool.

### October – Decorative bowl.

This project can be interpreted many ways but on this occasion I would particularly like you all to have a go at a small bowl in the style of Bert Marsh. Make the profile 'ogee' style (like a figure S), keep the walls as thin as you can (2 or 3mm is OK) and the overall dimensions about 5" to 6" in diameter by approximately 3 ½" to 4" high. The base is invariably quite small. If you prefer to keep a natural edge to the rim, that's fine.

When taking out the inside do it in steps of about 20mm at a time and sand to a finish as you go. This way the thicker wood nearer the base supports the thin walls and minimise problems that sanding a 'moved' bowl could bring. Sand to as fine a finish as you can. When reaching your final abrasive (400 to 600 grit) try sanding by applying a paste wax to the wood first. This cuts down sanding heat and gives a lovely silky finish.



*Suggested profile of bowl*

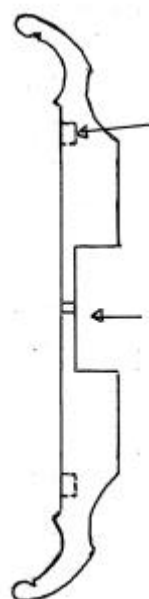
### November – Wall clock.

A nice easy bit of faceplate work but care is needed to cut the dial to a certain thickness to accommodate the clock spindle size. I would prefer for you not to use a bought dial plate but self adhesive numerals are OK. However a more interesting method is to insert a contrasting wood to mark the hours.

A nice blank of ash or sycamore is ideal for this project. The diameter can be between 7" to 10" and the overall thickness about 1 ½". Cheap quartz movements and hands are available quite readily. Mount the blank on a faceplate or screw chuck and true up what will be the back of the clock. Cut a recess to accommodate the movement but don't recess it too deeply; 2 to 3mm more than the thickness of the movement is all that's necessary.

At this stage it will be an advantage to establish how you will reverse chuck to turn the face. It may be that the recess formed for the quartz movement will accommodate your chuck. If not, then you have a couple of easy options. Firstly you can cut another chucking recess slightly wider than the movement recess. Secondly you could reverse the recess onto a jam chuck made from waste wood. So, after deciding which option to use, concentrate on finishing the back part of the clock. Sand to a finish and then polish. Reverse chuck and then turn the face. A hole needs to be drilled in the centre to accommodate the spindle nut for final fixing of the movement. This is done easily by drilling via a tailstock mounted Jacobs chuck and drill bit. The important point to remember is to get it just right. Too big and you have fixing problems. The rest of the face needs to be turned so that the dial thickness is just right. This depends on the length of the movement spindle. The usual dial thickness in the middle will be about 3mm. Keep inserting the movement from behind to judge how far through the spindle is projecting and a skim off more wood until the dial thickness is right.

If you feel you have the ability it would be nice to mark the main hour positions (12, 3, 6, 9) with a contrasting wooden plug. At this stage it is important to consider the grain alignment. Personally I always prefer the grain to be horizontal rather than vertical. When your decision is made either drill the holes for the wooden plugs or turn the face to a finish, sand, seal and polish. If you use wooden hour markers, turn the plug with a very slight taper so that the fit is snug. Glue them into place and when dry very carefully turn them flush to the dial face with a freshly sharpened gouge. Sand the front then seal and polish. If you are using self adhesive numerals then stick them on now.



*Profile of Clock*

*Wooden plugs*

*Recess for movement*

You are now ready to assemble and hang your clock on the wall.

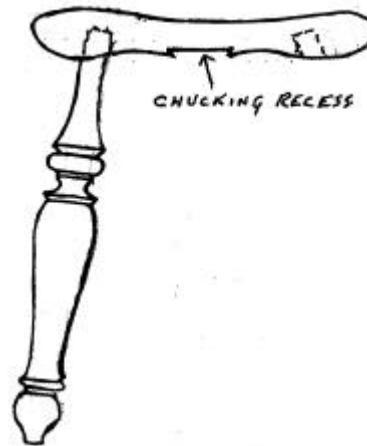
## December – 3 Legged Stool.

Over the years there have been several articles in the magazines about this project so if you have access to these then please refer to them.

Although this project is in fact quite simple with basic headstock and spindle turning methods employed, it will test your copying skills for the 3 legs. It will also test your ability to drill 3 holes in the underside of the seat to the same angle. I don't mind what size your stool is, so if yours is for a child or adult that's entirely up to you.

The dimensions given are those I have just made for my 18 month old grandson. The legs are made from blanks of ash 40mm square by 235mm long, and the seat blank is 200mm in diameter by 35mm thick. You can mount the seat blank onto a faceplate or glue to a waste block held in your chuck. If you mount on a faceplate make sure you secure with short screws else you will end up with holes in the top of the seat. The holes left by short screws will be turned away when the seat top is dished. For those with a hot melt glue gun I feel the glue chuck method is best in this case. True the underside first and form a recess to take your chuck. With a pencil, mark a ring about 35mm in from the edge and find the position for the 3 holes on this line. Drill the holes with a 20mm saw toothed bit on a pillar drill. If you haven't got one then don't worry as I will arrange for 3 or 4 club members to help in this case. The holes need to be about 20/25mm deep and at an angle of about 10 degrees. Return the blank to the lathe and finish the underside. Reverse chuck and turn the top. This looks best, and is more comfortable, if it's dished slightly.

The legs are a simple bit of spindle turning with a copy element involved, so keep the design fairly straightforward. Make sure the legs are a good fit into the seat holes, so take your time over this part. A project of this type can be finished with sealer and paste wax cut back with wire wool as it looks much better with a soft sheen than a high gloss. Glue into place and the finished stool should give you a lot of satisfaction in a job well done.



*Profile of stool showing just 1 leg*

The next issue of "YOUR TURN" will give the 2005 projects.

*Ian Woodford*

## Something on your chest?



### Get it off with a letter to Your Turn.

Your letters and e-mails are a source of great interest to our readers. So...

- if you have a tip or some information that would be useful to other members .....
- if you are unhappy about something, don't just mutter under your breath.....
- if you have an opinion about the way things are being organised (or are not!).....
- if you have an anecdote that would amuse us.....
- even if you just feel like saying thank you.....

Write or send an e-mail to me at the address on page 2  
Dave Gibbard, editor.

These **ENGINEERS' TALES** from Ron Broadway will strike a chord with many.

To the optimist, the glass is half full.  
To the pessimist, the glass is half empty.  
To the engineer, the glass is twice as big as it need be.

Three engineering students were gathered together discussing who designed the human body. One said, "It was a mechanical engineer. Look at all the joints." "No, it was an electronic engineer. The nervous system has many thousands of electrical connections." "Actually it was a civil engineer. Who else would run a toxic waste pipeline through a recreational area?"

The Science graduate asks, "Why does it work?"  
The Engineer asks, "How does it work?"  
The Accounting graduate asks, "What does it cost?"  
The Sociology graduate asks, "Do you want fries with that?"

Mechanical Engineers build weapons,  
Civil Engineers build targets.

An engineer was crossing a road one day when a frog called out to him and said, "If you kiss me, I'll turn into a beautiful princess". He reached down and put the frog in his pocket. The frog spoke up again and said, "If you kiss me and turn me back into a beautiful princess, I will stay with you for a week." The engineer took the frog out of his pocket, smiled at it and returned it to the pocket. The frog then cried out, "If you kiss me and turn me back into a princess, I'll stay with you and do ANYTHING you want." Again the engineer took the frog out, smiled at it and put it back. Finally, the frog asked, "What is the matter? I've told you I'm a beautiful princess, that I'll stay with you and do anything you want. Why won't you kiss me?" The engineer said, "Look, I don't have time for girls, but a talking frog, now that's cool."

---

## BEHIND THE SCENES

As we settle in to our new home there are the inevitable teething problems to tackle. Steve Page used the PA in the hall at the last meeting to very good effect, and we are trying to improve the light levels as the evenings draw in. On the whole it is working out quite well though. Plenty of space and the acoustics are better than the school. Parking is easier too in spite of initial concerns.

Reading between the lines, the reason we were ejected from the school may have had more to do with objections about parking from the local residents than any plans the school may have had for the hall. It is difficult to say yet what effect the move may have had on membership since every year there are people who don't renew but don't bother to tell us they are not going to. Then there are some who renew very late. There were just a few who actually said they would not be renewing because of the move. The forecast is that we will probably be about 20 to 25 members down. If that is so, they will probably be replaced during the year by new joiners (5 since last time for example). The intention is to distribute a list of members this month once we think that everyone who is going to renew has done so.

Once again Bob has done a magnificent job in organising next year's programme and is already working on 2006. Just a few finishing touches and the 2005 programme will be published in the next edition of Your Turn in November. And, of course, on the website.

As ever, George could use some more volunteers for turn-ins. There are many experienced turners in the club and it would be good to see some new faces. I know you have to make an effort, but it can be rewarding. I did a stint in August and rather enjoyed it. I learned a few things from the verbal contributions from the audience, I got bought a beer to keep me going and I since sold the things I made during the demo. All in all an enjoyable and productive evening. You too could have such fun.

## NEW MEMBERS

Welcome to:-

**Brian Hurst** from Winchester, 01962 620119

**Alf Cooper** of Fair oak, 023 8069 4513

**Lynda Clark** of Ampfield, 01794 522788

**Peter White** of Timsbury, 01794 367742

**Calum Hardie** of Fair oak, 023 8060 1840.

It's nice to see a lady and a junior (Calum) amongst the new members. Welcome to all of you.

## SIGNING OFF

Still on the subject of participation, the second round of the competition comes up in October. The first round entry was extremely disappointing. The second round is a bowl or platter made using a faceplate (or chuck). As usual there are open and novice categories. Surely we've all got a bowl indoors we could bring? What a magnificent demonstration of the interest and ability in the club if there were to be 50 entries instead of 5.

If that sounds unlikely, see Ian Woodford's report on the Woodbury Club on the letters page.

*Dave Gibbard, Editor*