

# YOUR TURN

Hampshire Woodturners Association newsletter

Winter issue, Dec 2009



Members' donations to  
HWA charity of the year



**Plus...**

Pole lathe turning,  
Wood conversion,  
Les Thorne demo,  
Nick Agar Workshop,  
Programme of Events for 2010



and stocking fillers



*Spectacular climax to Nick Agar's  
Workshop!*

# YOUR TURN

Winter 2009



## CONTENTS

- **Editorial**
- **Reports of Events**
  - 7 September – Pole lathe turning
  - 5 October – Converting wood
  - 2 November – the Les Thorne Show
  - Outreach update – Woodland Trust
  - 22 November – Nick Agar workshop
- **Coming Events**
  - 7 December Meeting
  - + **Programme for 2010**
- **Letters**
- **Wessex Heartbeat**
  - Culmination of HWA charity programme
- **Community Woodfair**
- **The Tale of Brian's Knob**
- **Behind the scenes**
  - Report from the "extended committee"
- **New Members**
- **Obituary**
  - Robert Collings
- **Signing off**

.....Plus various stocking fillers



## COMMITTEE

Jon Gibbs, Chairman – 01962774051  
[jon.gibbs@motorola.com](mailto:jon.gibbs@motorola.com)  
Bob Hope, Secretary – 01189813552  
[bobhope1@aol.com](mailto:bobhope1@aol.com)  
Alan Sturgess, Treasurer – 02380892622  
[aesturg@sky.com](mailto:aesturg@sky.com)  
Denis Hilditch, Membership – 02380420901  
[denishilditch@aol.com](mailto:denishilditch@aol.com)  
Gerry Dixon, Gallery – 02380263949  
[gerrydixon@btinternet.com](mailto:gerrydixon@btinternet.com)  
Martin Stallard, – 01489781987  
[martin.stallard@interserve.com](mailto:martin.stallard@interserve.com)  
John Holden – 02380733627  
[john.hwa@rya-online.net](mailto:john.hwa@rya-online.net)  
Dave Gibbard, Editor – 02380262660  
[d-m.gibbard@dsl.pipex.com](mailto:d-m.gibbard@dsl.pipex.com)  
Dan Would, co-opted for website upgrade\*  
02380653376 [Daniel@demigoth.org](mailto:Daniel@demigoth.org)

## EDITORIAL

### Not on your Nellie

In a remote community in a forgotten corner of Eastleigh, barely touched by progress, where folklore is passed down the generations by word of mouth often by rhyme or song, I stumbled across a very old man sitting by the half open door of an ancient shed. Alone now, he was trying to eke out a meagre existence as a woodturner like his father before him. He told me of his father and mother, long gone, and of his humble origin. He broke into a plaintive refrain. It went something like this:

*In the county of Hampshire a turner did dwell,  
he had a housekeeper and her name was Nell,  
now Nell was a good girl and sweet seventeen  
'til he showed her the works of his turning machine.*

*One cold winter's night when she was in bed  
he went up to Nellie and to her he said:  
"Now I know a place where we'll never be seen  
and I'll show you the works of my turning machine!"*

*The shed door was open they both went inside,  
he unveiled the monster and displayed it with pride.  
He adjusted the tool rest, 'twas a sight to be seen  
as away went the works of his turning machine.*

*And then six months later he discovered the rub,  
young Nell was a member of quite a different club  
and all over town it was plain to be seen  
she'd got caught in the works of his turning machine.....*

I left him with his memories, thinking never to see him again. But I'd swear I catch a fleeting sight of his spirit from time to time at HWA meetings.

*(Trad, with modifications.)*

*Dave Gibbard, Editor*



A class was asked to write a short story in as few words as possible to include references to Religion, Sexuality and Mystery.

One girl received an A+ with the following:  
"Good God, I 'm pregnant, I wonder who did it."

\* comments about the website format can be sent to Dan directly or posted on the site.

## REPORTS OF EVENTS

### 7 September - Pole Lathe Turning,

The demo this evening was about turning in the traditional manner by club member Steve Reed. The force to turn the lathe comes from a springy pole attached to which is a cord wrapped around part of the workpiece. The most common form of pole lathe was for spindle work as used by bodgers to produce spindles for chair making. Bodgers worked in the woods turning legs for chairs from green wood, usually ash. The pole was originally staked in the ground or use was made of a growing sapling. Not wishing to make a hole in the dance floor, Steve had modified the method to use a bungee stretched between 2 vertical poles at either end of the lathe bed.

Steve showed how the wood is split and roughly shaped using a side axe (*picture right*) and then refined with a draw knife on a shaving horse (*below*) before putting on the lathe.



The chair leg is mounted on spikes between centres which are fixed in adjustable blocks of wood on the wooden lathe bed.

The cord is pulled via a wooden lever operated by the turner's foot causing a reciprocating movement of the spindle.

The cutting tools are similar to the modern chisels and gouges though the latter are more open. Of course they only cut in one direction of rotation, nonetheless a good bodger who would have been self employed would expect to turn 2 ½ gross of legs in a week! The legs would be bought for assembly into chairs at a factory and allowed to dry for a short while. The chairs were usually of the Windsor type and were made in large numbers as utility items.

The derogatory use of the word bodger to describe someone who does a poor, unfinished job is thought to stem from the fact that bodgers left the end of the legs unfinished. They would need to be trued-up after drying anyway and would be trimmed after installation in a chair by a bottomer.

Nothing was drawn up. The measurements for the legs and the positions of the coves etc would have all been marked on a single strip of wood, a valuable item in the bodger's tool box.

Steve referred anyone wishing to read more about this fascinating glimpse into the past to a book called "the English Regional Chair". The author is Prof W. Cotton.

Pole lathes were also used for bowls (*see the picture, right, supplied by Steve*) but these were more massive affairs often set up in a factory. The drive would be via a spindle attached to the bowl.



The power for multiple lathes sometimes came from a flywheel which was manually driven though water power eventually took over. No doubt when they had worn out all the lads who worked the flywheels. Hook tools would have been used for the hollowing. You can see more about this on [www.robin-wood.co.uk](http://www.robin-wood.co.uk).



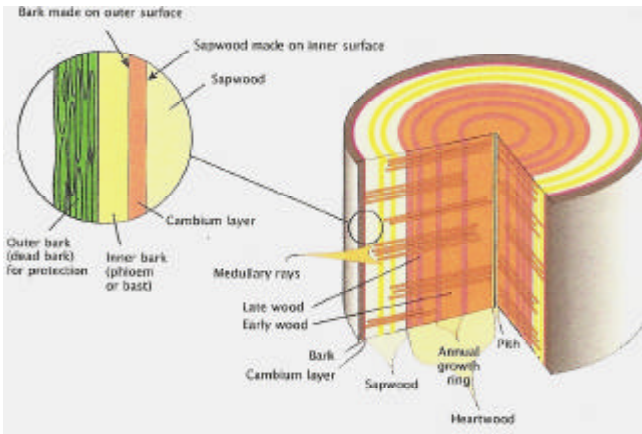
After all that history, Brian Hannam (*picture left*) brought us up to date with a thoughtful critique on the gallery. A much larger display of work this month as you can see on the HWA website.

Editor

Continued.....

## 5 October – Converting Wood

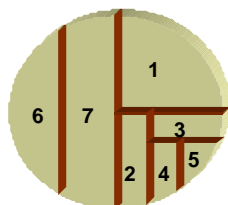
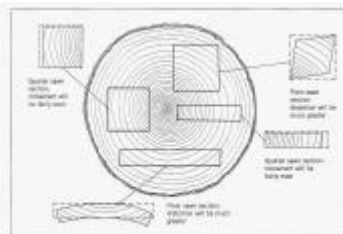
Every woodturner uses wood but many have only a vague idea of where it comes from and why it can be so unstable. This evening's presentation by club members Bob Hope, Alan Sturgess and Dave Gibbard shed some light on the subject. Bob described how trees take in their nutrients dissolved in water via their roots by osmosis and how this passes up the trunk in the sapwood.



So wood contains water, which, as a % of the dry weight, is called the moisture content. For a living tree m.c. can be over 100% (i.e. more than half the total weight). Once a log is cut it will lose water and eventually reach equilibrium with the atmosphere. Even in a "dry" house, at the equilibrium point the wood will still have m.c. of about 12%. In a damper atmosphere and it will re-absorb water and will reach a higher m.c. Wood is composed of cells. Free water between the cells is lost quite quickly but that contained in the cells takes longer. The problem is that wood shrinks as it dries and the shrinkage is not uniform. Shrinkage along the log is negligible but radially it is typically 4% and circumferentially it can be 8%. This means if you leave a log to dry the stresses build up and it will surely split. There are several ways of dealing with this:-

### Cutting

Alan showed the cuts a sawmill could make to allow the cut wood to dry without splitting. The cheap option is to cut "through and through" into parallel planks. However, depending on the position in the log, some distortion will occur, producing what some wag in the audience described as B&Q planks. A better method is to "quarter saw". However this is laborious as the log has to be turned 90° for each cut and is wasteful of timber.



### Water replacement

The water in the wood can be slowly replaced by PEG (poly ethylene glycol). This is how the recovered timbers of the Mary Rose were treated to stabilise them. In that case spraying took several years but small items can be immersed in hot PEG solutions and the process can be reduced to a month or two. Few of us have experience of this process and it is not widely used by turners because of the complexity. It can also change the appearance and texture of the wood.

### Rough Turning

Dave showed some bowls that had been rough turned when wet and allowed to dry. Most of the wet wood is removed to give a rough bowl shape with a wall thickness roughly proportional to the bowl diameter (say 1" per 10"). This will dry much more quickly than a thick disc blank and is the only practical way of making a deep bowl. The drying process is often slowed down by sealing the exposed surfaces. This allows the wood to accommodate the stresses produced by drying. Sealing can be done by dipping in molten wax, painting with PVA or wrapping in paper or cling film.

After drying the rough bowl will have distorted and is re-mounted on the lathe and turned to its final form.

### Wet Turning

An alternative to drying before turning is to turn wet. It is necessary to turn to a thin wall to allow the wood to dry quickly without splitting. Some distortion will occur. Decorative items, often with the bark retained, can be very attractive when produced in this way.

Progression from cut log to finished item can be as short as a day or two. Dave showed several examples turned with grain parallel with the turning axis and at right angles to it.



After tea, Bob and Alan demonstrated the process of cutting a log and rough turning it. Normally the cutting would be done with a chain saw but for the demo a safer but slower reciprocating saw was used. A cylinder was cut and split to produce 2 "D" section pieces. The corners were cut off to reduce the subsequent tuning and the work piece was mounted on the lathe with the flat face of the D facing the headstock. It was turned to a rough bowl shape with a spigot on the bottom. Reversing to mount the spigot in a chuck, the centre was hollowed out. As an unintended part of the demonstration, the spigot split off and had to be re-turned. This was because the spigot was cut from a very soft part of the log near the surface. It is a good idea to sacrifice a little more wood to ensure the spigot is from harder material.

*Continued..*

After all that excitement Jean Turner gave a critique of the gallery items. It was good to see a new face, especially that rare phenomenon of a female one in this role and to hear some thoughtful opinions from a fresh viewpoint. Nice gallery too. See the gallery on the website.

Finally a look at the excellent display of some of the work donated by our members to Wessex Heartbeat charity.



Some of the work will be auctioned at the Heartbeat annual Dinner in November and the rest sold at Winchester Christmas Market.

## 2 November- The Les Thorne Show

Our very own International Megastar entertained in his own inimitable fashion.

Offered the choice of a box or a bowl by Les, the members asked for a box. In fact Les did both, starting with a box in ash. The procedure is fairly standard and I'm not going to describe the demo in detail; anyone interested can get a DVD from Les. What you don't get on the DVD is the famous banter and interplay with the audience.

There were useful tips along the way with pros and cons of, for example, push and pull strokes in hollowing. The use of a lacquer to seal the ends of the fibres inside the box before making a final cut may also be new to some. Sanding sealer can be used as an alternative but Les prefers spray lacquer as less messy and more uniform.

Les's view on the perennial debate about the fit of the lid is that it should be neither too tight nor too loose. Ideally picking up by the lid should leave the base on the table but if inverted, when picking up by the base, the lid should stay attached. A fine balance! The fit should be tight initially to allow the lid to be jammed on to finish turning and then the mating surface on the base relieved slightly.



The box, pictured left, was attractively shaped like a bottle kiln with a bead at the top to provide a finger grip to remove the lid. The open grain of ash lends itself to being picked out by a coloured filler.

Les first sprayed with an ebonising lacquer to give a shiny black base and, when dry, rubbed in Liberon gold coloured filler.



The excess was wiped away using wax which was buffed up to give a nice finish equally at home in a gallery or craft fair.



Les went on to turn a natural edge bowl from a half log with grain at right angles to the axis of turning. No time to finish it, but Les left that to a volunteer from the audience. Hopefully we'll see it on the gallery table next time.

Speaking of which, the evening was rounded off by a critique on the gallery which was impressive in terms of both quality and quantity. (Picture right).

It would be nice to see this effort maintained.

Pictures of the gallery items can be seen on the website.



## OUTREACH PROGRAMME UPDATE Countryside Education Trust, Beaulieu

Alan Sturgess



During the October half term I was asked to demonstrate at the open day of the C.E.T. Treehouse Study Centre. The spectacular treehouse lies in 40 acres of ancient

broadleaf woodland on the Beaulieu estate.

Designed by Samantha Sherwood of Oxford Brookes University, the competition winner, the Centre nestles in the treetops. Its classrooms, turrets, viewing platforms and rope bridges provide an inspirational learning environment.

The main "Beaufort" treehouse opened by Alan Titchmarsh in 2008 cost £675,00.00 and holds up to 120. With access to the aerial veranda and viewing tower, the classroom provides a real opportunity to get close to the life in the trees. Over the rope bridge, the Graham Carter treehouse provides a more intimate space for up to 60 students.

Along with other woodies I spent the day turning small items for the kids. Over 500 came through, so plenty of interest in all the actives. There were two pole lathes, a hurdle maker, basket weaver, charcoal burners, peg maker and me, the only one needing electricity. There were displays by birds of prey, archery and other actives. In an adjacent field tractors were working with saws, splitters and cutters, converting trees into planks, rounds, firewood, and mulch. Some tractors were giving rides and transporting the visitors between the car park and the event. Each child was given a trail map with 25 questions to be answered.

I started turning mushrooms and fruit but had underestimated the number of kids that would want a turned item. I made 7 apples 5 pears 17 mushrooms 24 carrier bag handles and 20 light pulls. Towards the end with my wood gone, I tried my hand on the pole lathe. Not as easy as it looks; must watch Steve Reed more closely next time.

My big disappointment was having taken a couple of pictures of the kids watching me turn I was asked to delete them unless I had the parents permission to take the photos. What's it all coming to?



## NICK AGAR WORKSHOP - 22 November

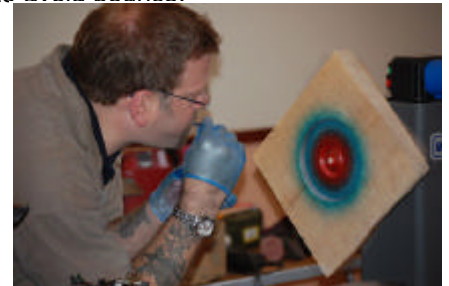
This was billed as a spectacular and so it proved! It was a very full day and I only have space for a taster here. (But see "signing off").

Nick concentrated on work involving multi-centre turning with decoration, starting with a wall plaque. A square piece of sycamore was glued to mdf backing with hot melt glue around the edge. This method allows a faceplate to be screwed to the mdf for various centre positions without damaging the work and is easily removed afterwards. The glue alone is usually adequate but a few screws can be added for more security particularly for larger work.

Slow speed is essential as the work is unbalanced. Various patterns of grooves, beads and cavities were turned before applying texture and colour. A number of texturing tools were used and spirit base dyes were sprayed using a mouth-operated diffuser.

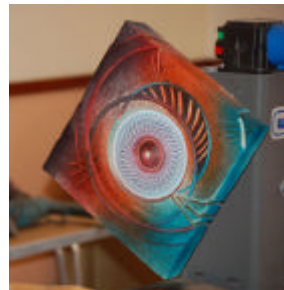
The faceplate was moved to different centres and the process continued. Some of the cuts were partly outside the edge of the work ("air cuts") where firm tool hold is essential to avoid bounce.

The surface was sanded and decorative cuts applied with an angle grinder before more spraying to produce a most appealing wall hanging.



Using spray diffuser above and the final plaque, left.

Textured discs pictured below with small Sorbyl and 2 sizes of Wagner tools.



Nick then gave examples of textures achieved with different tools on small end-grain discs. The discs were first coloured and then limed after texturing. The penultimate demo was a platter including how to decorate an ebonised surface in 5 seconds with a mini Arbotech (right).

And for a grandstand finish Nick tested the smoke detectors which passed with flying colours (and flashing blue lights on the fire engine).



## COMING EVENTS, PROGRAMME FOR 2010

Date	Event	Demonstrator
7 December 2009	Christmas social evening	
4 January 2010	Inlaying turned rings	Mike Haselden
1 February	Winged Vessels	Mark Baker
1 March	Box with carved finial lid	Mark Sanger
19 April	AGM + subject TBA	
17 May	TBA	
7 June	Self re-winding spinning top	Paul Nesbitt
5 July	TBA	
2 August	TBA	
6 September	History of the Windsor Chair	Stuart King
4 October	TBA	
1 November	The Les Thorne Show	Les Thorne
6 December	Christmas Social	

Thanks to Bob Hope for arranging another great programme. If you would like to help with a contribution on the dates not yet filled, please let Bob or another committee member know. Remember there is an incentive of a year's membership for any member doing a demo or presentation as the main event of an evening. *Editor*

## LETTERS

### Just the one from Keith Barnes

I took up your challenge to find out more about a **Spartle** (*Outreach programme, Autumn issue*). My wife is half Scottish (not quite sure which half). She knew what a Spartle was, but like yourself we could not find it in any dictionary so I tried good old Google and Wikipedia came up with the answer, SPIRTLE also known as SPURTLE or THEEVIL, it is a Scots kitchen tool, dating from at least the fifteenth century. It was originally a flat, wooden, spatula-like utensil, used for flipping oatcakes on a hot griddle. Over time, the original implement changed shape and began being used specifically for stirring oatmeal and soups. The rod-like shape is designed for constant stirring which prevents the porridge from congealing and so becoming lumpy and unappetising. It is in common use throughout Scotland, although it is rarer in Angus and Fife where the term Theevil is used.

Did you know there is a World Porridge Cooking Contest known as "THE GOLDEN SPURTLE"

For the T.V. Coronation Street addicts, Tony Gordon used one to make porridge. (June 15th 2009).

I asked my son if he knew what a Spurtle was, "is he a Tottenham Hotspur supporter?" Mind you he is football crazy.

Having found all this out my wife has asked me to turn a Spartle, so now I need to find a piece of Beech. (any offers?).

Keith Barnes

*Is this Keith making a bid to become "factoid" champion?*

## WESSEX HEARTBEAT

Wessex Heartbeat is the charity being supported by HWA this year. Denis Hilditch has been running our campaign and has been collecting cash and turned items from members throughout the year as our donation. Cash donations have reached £65 and as you can see from the pictures the collection of turned items looks very impressive, thanks to all the members who have donated. (There were, in addition a couple of late items which missed Denis's cover photo shoot, see picture right).

Alan Sturgess and I went with Denis to see Tina Richardson for the hand-over to Wessex Heartbeat in Southampton on 3<sup>rd</sup> November. We were given a guided tour of the 2 Heartbeat facilities.

The first, a large, extended house opposite the entrance to the Hospital is used by relatives of patients with serious heart problems being treated in the cardiac unit. Sometimes this can be a protracted period of time and the cost of accommodation could be prohibitive. Heartbeat make no charge for those qualifying to stay (up to 40 at a time). Guests can use the kitchen to cook for themselves and the lounge to relax and make themselves at home.

The other facility is the education centre in the new part of the hospital. This is a most impressive unit crammed with technology which can house conferences, meetings and presentations. Link-ups to the cardiac unit for live observation of operations are possible as well as live remote diagnostics to allow specialists to oversee treatment of patients in all parts of the world.

Our donations will go towards the efforts to raise about a million pounds a year which is needed to operate the facilities.

Some of our items are being auctioned at the annual fund raising ball on 27<sup>th</sup> November and the remainder will be on sale at the Wessex Heartbeat kiosk at the Winchester Christmas market. I'll let you know next time how much our efforts raise.

Visit [www.heartbeat.co.uk](http://www.heartbeat.co.uk)

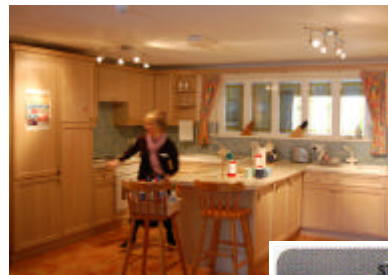
### "Stop Press"

Message from Tina Richardson after the Heartbeat Ball:

*"The event raised approx £13,000, thank you to the Hampshire Wood Turners for their significant contribution to the prizes, the items were very much admired. You were kind enough to provide many items so the excess we are selling at the Winchester Christmas Market on the 8<sup>th</sup> /9th December in the charity chalet. If any of your members are at the market please come and say hello."*

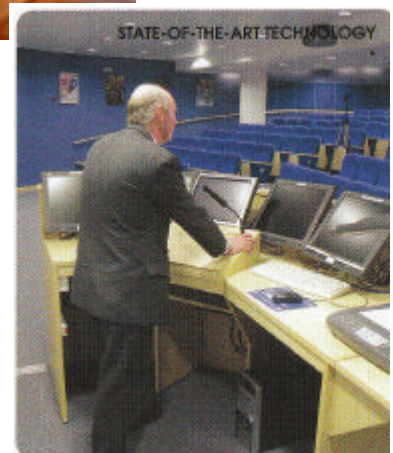


*2 Late items from November meeting. See also main picture on cover page.*



*One of the kitchens in the guest house.*

*High Tech lecture theatre in Education Centre*



# Community Woodfair

Zionshill Copse,  
Chandler's Ford  
5 September



This was the **10<sup>th</sup> Community Woodfair**, organised by Test Valley Borough Council, and it has grown over the years to this superb presentation of wood-related activities held in natural woodland setting. The attendance was very good, helped no doubt by the fine weather and free entry.

We were treated to demonstrations of turning (pole lathe and electric), carving (by hand and chain saw), making of sticks, spoons, fences, hurdles, charcoal burning, bee keeping, tree felling and extraction by heavy horses etc.....

It was great to see so many families with children watching and taking part in the activities. I can't help feeling we should have been there; it would have been an excellent place for our outreach programme. Perhaps we can look into it for next year. Do we have any members with connections?

*Editor*



A bit of tuition in hurdle making



Pole lathe turner Bob Sawyer and some of his very nice work.



Hampshire Woodcarvers "in action"

and some fine examples of their work.



Young generation getting into weaving baskets.

From the Club which brought you the Saga of Adrian's Balls, now read:

## The Tale of Brian's Knob

Members may remember that I put a message on our website a few months ago seeking 3/8 x 8tpi thread chasing tools, without bothering to give precise details of the mission.

This lack of detail was simply because of lack of time, not because it was a state secret.

The job was actually to make 6 replacement knobs for the drawers of an early Victorian desk. The picture shows the sole remaining original knob of unusual two-piece design manufacture beside one of the set that I ended up making.

Two members kindly offered help, though neither actually had thread chasers of the very unusual specification that was needed. The problem was the small diameter: 1/2 x 8tpi is still available but I was unable to locate a chaser to replicate the original smaller diameter.

The photo shows what I had to do in the absence of the tooling needed: I put a metal bush in the new knob and a matching M6 threaded stud in the new rear part. I put a piece of studding in my Jacobs chuck and threaded the knob

blank onto the stud in order to turn the required shape.

The original threaded rear part was maple, which of course is still easily obtained, but the knob proper is mahogany and I mean REAL mahogany, Cuban or Spanish or Caribbean as you prefer. Spanish simply meant that it came from the Spanish colonies in the Caribbean. This is just fabulous stuff, a delight to work, dense, close grained, hard, clean-cutting material. Doesn't it look perky in the picture, just imagine new furniture looking like that, it's not much like the mahogany look that we think of nowadays. The finish is (of course) French polish.

To the eternal shame of the timber trade, the wood was not sustainably managed and was casually used and overexploited to extinction by the 1920's. The 'mahogany' that we are sold nowadays comes from several different and greatly inferior species, originating in South America, or even worse Africa, or worst of all from the Far East. The good news that emerged just a few years ago is that the real stuff is not extinct as had been believed for many years.



"It's the way I tell them"



It has been found growing as shade trees on tea plantations in the Far East and Africa. So, given enough years, woodworkers and their clients may enjoy it again! I get this lovely wood from lovely customers: over the years I have acquired several upmarket furniture restorer customers who insist on using wood from the same period as the original objects.

They buy wrecked or unfashionable furniture, newel posts, anything to get genuine wood for grafters like me to use in their restoration work.

I have to label it all and keep it in separate bags so that X's wood doesn't get used on Y's work! The wood that I have used for this project is scraps from these sources. I take care to maximise the usage of this irreplaceable resource.... the last tiny pieces that I can see no use for go to a man who makes lace bobbins. Some remarkable stuff comes in from these people. One brought a big fat leg, perhaps off a large table, it looked like nice mahogany to me and the client. When I started to cut it up on the bandsaw, I realised that the 6" square top part above the pummel was veneered.

Alarm bells rang! The maker had used a piece of classy wood for the lower turned part, where the quality of the wood would be visible, and an inferior piece at the top where it was easily hidden by veneer.

Cowboys have been around for a long time! The two parts were just dowelled together. The original buyer probably never knew- my client was greatly amused until he realised that I needed more material from him.

Brian Hannam



Prince Charles was visiting an Edinburgh hospital. He entered a ward full of patients with no obvious sign of injury or illness and greeted one. The patient replied:

*"Fair fa your honest sonsie face,  
Great chieftain o the puddin' race,  
Aboon them a ye take yer place,  
Painch, tripe or thairm,  
As lang's my airm."*

Prince Charles was confused, so he just grinned and moved on to the next patient, who said:

*"Some hae meat an canna eat,  
And some wad eat that want it,  
But we hae meat an we can eat,  
So let the Lord be thankit."*

Even more confused, the Prince moved on to the next patient, who immediately began to chant

*"Wee sleeikit, cowerin, timrous beasty,  
O the panic in thy breasty,  
Thou needna start awa sae hastie,  
Wi bickering brattle."*

Now seriously troubled, HRH turned to the accompanying doctor and asked "Is this a psychiatric ward?"

"No," replied the doctor, "this is the serious Burns unit."

## BEHIND THE SCENES - Meeting of the "Extended" Committee

In October there was a meeting of the "extended" committee to which those who help with various club activities were invited. This is a flavour of what went on.

It is good to see the **membership** creeping back up having fallen considerably from its peak of about 140 a few years ago. Denis Hilditch said it now stands at 87. About 3/4 are reachable by E-mail now, producing a useful saving on newsletter distribution cost.

**Club funds** stand at £4075, which is high at this time of year as it includes membership fees. It is a bit down on the same time last year but the budget should be OK. But there is concern about a possible loss from the Nick Agar workshop as there were only 10 bookings at the time. (Since up to 18)

Bryan Matcham reported that the **raffle** contributes a steady £20 per month to funds. There was a discussion about when the draw should take place but it was agreed the end of the evening was the right time. Also discussed were the time taken calling numbers, whether there should be an occasional "star" prize and whether the £20 prize introduced to encourage badge wearing is still necessary. On the last point it was suggested that a voucher to spend in the club shop would encourage the use of the shop. We may try to boost ticket sales by going round at tea-time like Monty used to do.

Geoff Spierling said the **shop** sales had picked up recently but he is still open to ideas about stocking other lines if they can be justified. Geoff also volunteered to take charge of the **library** to list and rationalise the stock of books and videos.

Roy Nailor couldn't attend but sent in a report from the **Tea boys**. There was continuing irritation that some members were not putting in their 20p fee. It was agreed that members would be reminded in the announcements and maybe someone could volunteer to keep an eye on the queue.

It was left to the tea committee to decide whether to increase the charge but getting everyone to pay seems more important to start with.

Like others, Roy grumbled about lack of **parking** for those bringing things to the meetings. However, there is a new Steward who is more relaxed about a small number of cars being left at the back provided they do not obstruct emergency access or staff parking. George Gale has volunteered to police parking.

Harry Woollhead has started a new low key **novice group**. Finding time to talk during meetings is a problem. It was agreed that this could continue throughout turn-in type evenings. An early start, say 7 o'clock was suggested for novices. The committee was asked to consider reviving the mentoring scheme.

Novices often don't know where to get wood. Harry would be pleased to accept donations of wood from other members for novice use.

The **AV system** is now generally considered very good but there are some problems with interference with sound because of changing frequency standards. Microphones can also be tricky particularly when demonstrators move around and put on masks and goggles. Positioning of cameras can be problematic though demonstrators could help by being more aware of them. Maybe a bit more rehearsal needed.

Next year's **programme of events** and the **Wessex Heartbeat** charity are covered separately in this Issue.

*If anyone has any comments or would like to help with any of the issues raised, please write to me at Your Turn or see a committee member.*

*Editor*



### Who's a naughty boy then?

As Christmas approached a woman had the problem that haunts us all; what gift to buy her spouse. One day she was walking past a pet shop and noticed a parrot for sale. That could be amusing, she thought and went in.

The parrot was beautiful and reasonably priced at £20. She asked the assistant about it.

"Well", he said, "there are some snags. To be honest with you, he was previously owned by a brothel keeper and the bird has picked up some colourful ways of speaking. He wouldn't suit everyone".

We're a broad-minded family, she thought, I can live with that, and she decided to buy the parrot.....

On Christmas morning the family gathered to exchange presents. "Merry Christmas, darling" she said as she uncovered the parrot.

The family were impressed and bird blinked and looked around the room.

"New place" he squawked, "very nice."

He noticed the family's two teenaged daughters.

"New girls too, very sexy."

They giggled at this and the parrot, encouraged, continued to look around.

His eyes settled on the husband and he squawked:-

"Oh, hello Keith!"

## NEW MEMBERS

Please welcome 3 new members:

John Gordon of Woodlands, Southampton 02380292830

Jack Mansfield of Rownhams, 02380732677 and

Philip Moody of Millbrook, 07773977283.

Give them a call if you live nearby and see how they are settling in.

## OBITUARY *by Chris Davey* Robert Collings 1930 – 2009

Robert was born in Plymouth and retained his great love of the sea to the end, sailing with his son Paul.

He did his National Service in the RAF and then worked for HM Customs where he enjoyed the work involving the customs cutter.

It was after his retirement from there that I first met him.

I had gone into Barron Tools in Shirley, Southampton and the shop owner was trying to sell Robert a 'Naerok' Lathe plus a load of other tools. When they discussed price and he left to go and think about it I introduced myself and ask where he lived as I had the same lathe under my bench gathering dust that he could have a go on. He lived at the other end of North Baddesley where I live, problem solved.

As he had not turned since schooldays, a few sessions on my Tyme Cub encouraged him to convert the garden shed and the Naerok found a new home.

He was keen to find a hobby for his retirement and he joined Hampshire Woodturners about 19 years ago.

He enjoyed the novice tasks set him and progressed onto taking his work to Local Craft Fairs.



He participated in the Club turn-ins when asked and one of his last tasks was to give a critique of the Gallery

*(Picture left, doing the gallery critique in April this year).*

I enjoyed the trips to woodworking shows with him, especially Yandles although Jan, his wife, would wonder what he would bring home next and her parting words were 'no more wood'.

Robert often said that he owed so much to us at Hampshire Woodturners for making his retirement so enjoyable by the encouragement and enthusiasm of the members.

*Chris Davey*

ps The Naerok Lathe is again looking for a new home! Anyone interested can call me on 02380733817. I'll be compiling a list of other items too which I'll put on the website.

*Chris*

## SIGNING OFF

I have lots more pictures from the Nick Agar Workshop and am thinking of doing a fuller write up than I had space for here.

Let me know if you would be interested.

There would be no charge for an electronic version via E-mail attachment or the website but I would make a small charge for the cost of printing in colour if you want a paper copy.

I have had a comment that the text on the diagrams in the report about wood conversion is hard to read. If anyone would like the original presentation diagrams, I'll see what I can do.

Finally Geoff Spierling tells me that HWA iron-on badges are now available in the shop at £6.50

That's all for this year folks.  
Merry Christmas and a Happy New Year.

*Dave Gibbard, Editor*